

**CERTIFIED LAND CORNER RECORDATION**

T 12 N

DESCRIPTION OF CORNER EVIDENCE FOUND, AND ORIGINAL RECORD (If known)

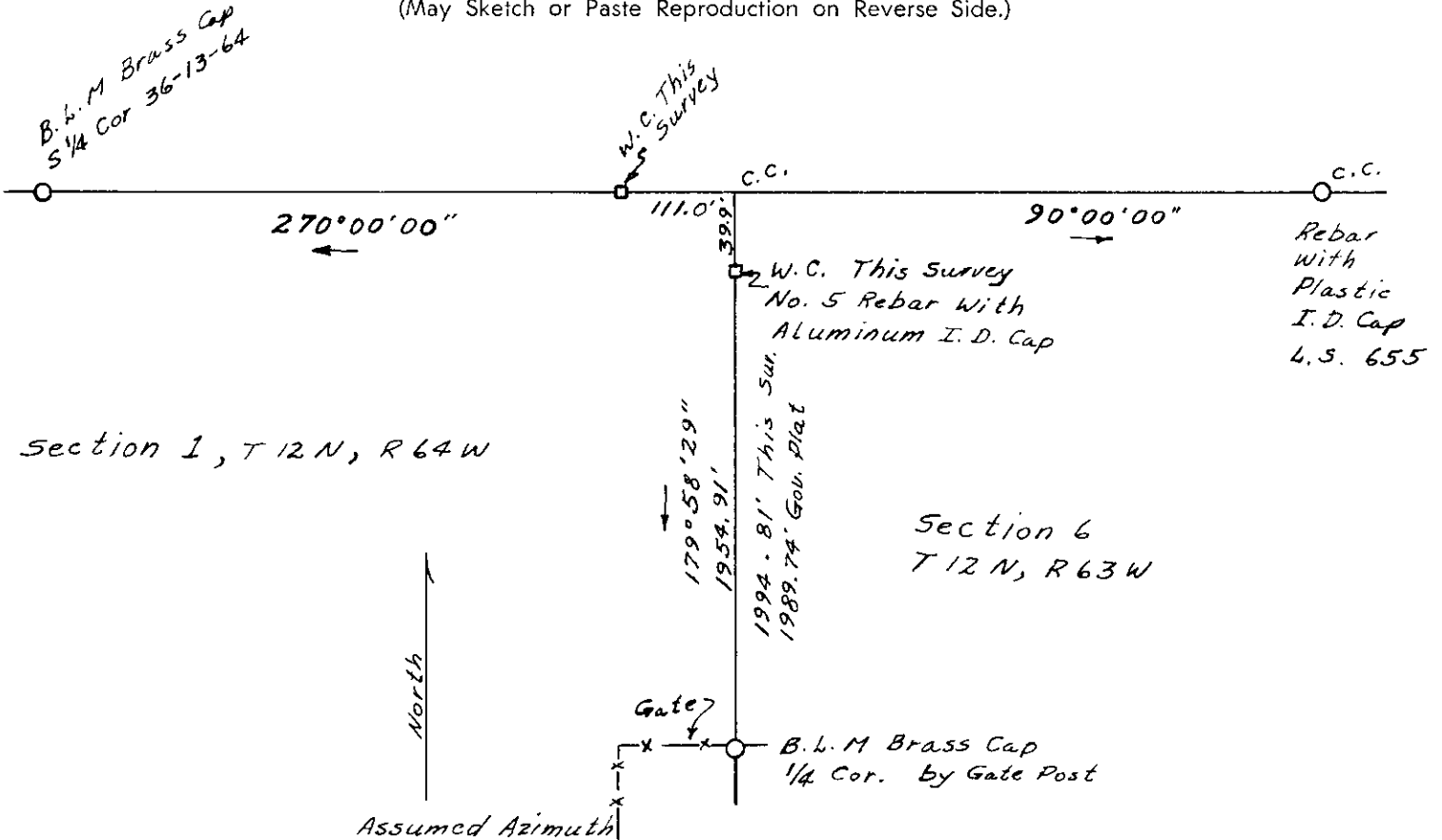
Sec. 1 | Sec. 6  
 1/4 |  
 cor |  
 R-64-W | R-63-W

Found Standard G.L.O. Brass Cap. Pipe was bent, however it did not appear that the pipe location had been disturbed.

DESCRIPTION OF MONUMENT AND ACCESSORIES ESTABLISHED TO PERPETUATE THE ORIGINAL LOCATION OF THIS CORNER:

Removed the monument from the ground and straightened pipe. Replaced monument in hole where it was found.

SKETCH, WITH COURSE AND DISTANCE TO ADJACENT CORNER IF DETERMINED IN THIS SURVEY.  
 (May Sketch or Paste Reproduction on Reverse Side.)



Section 1, T 12 N, R 64 W

Section 6  
 T 12 N, R 63 W

I, Edward C. Fry certify that I have carefully performed ~~or reviewed~~ the work done on the diagrammed corner as reported on this recordation form and approve the same.

Edward C. Fry (11-9-78) Wyo. P.E., L.S. 662  
 Signature of Surveyor Registration No.

STATE OF WYOMING,  
 Office of Clerk and Recorder,  
 County of Laramie

507799

This "corner record" was filed for record on the 21 day of November, 1978, was noted on the cross-index plat and is assigned page No. \_\_\_\_\_, in book No. \_\_\_\_\_.

Janet C. Witchard  
 County Official

Cross Index No. <u>516</u>	T. <u>63</u>	R. <u>63</u>	Mer.
	T. _____	R. _____	Mer.
<u>C-25 #2</u>	T. <u>62</u>	R. <u>64</u>	Mer.
	T. _____	R. _____	Mer.
	T. _____	R. _____	Mer.
	T. _____	R. _____	Mer.